

Chromebook Direct Printing Via CUPS / IPP

This is a "how to" on setting up a non cloud based printer on a Chromebook using CUPS/IPP printing.

I believe this to be more intuitive than the actual HP printing app because it supports more devices via IPP. This fills the gap when you don't have a computer handy.

The saved printers will only be available to the profile they are installed on.

This has been tested with the HP 600 M601, P4015 and Color CP3505 as well as others.

CAUTION: WILL NOT WORK ON PRINTERS THAT DO NOT SUPPORT IPP. IF YOU DO SETUP A NON IPP PRINTER IT WILL PRINT ARTIFACTS AS WELL AS FEED PAPER UNTIL THERE IS A FAILURE. THE ONLY WAY TO STOP THE PRINT JOB WILL BE TO DISCONNECT THE PRINTER FROM POWER AND REMOVE THE DRIVER FROM THE COMPUTER. IF YOU ARE NOT SURE ABOUT THE PRINTER THEN PLEASE DO NOT ATTEMPT TO INSTALL.

Step 1 - Log on to your Chromebook

Step 2 - Get the CUPS Support App for Chromebooks:

https://chrome.google.com/webstore/detail/ipp-cups-printing-for-chr/lkhfeoafdqbaecajkdbioenncjopbpmk?utm_source=chrome-app-launcher

Step 3 - Have the ip address for your printer ready for the next step:

Step 4 - Name your printer and place IPP destination: (SCREEN MAY LOOK DIFFERENT, JUST MAKE SURE DATA IS ENTERED IN PROPER FIELDS)

Printer:

The printer name can be anything you want

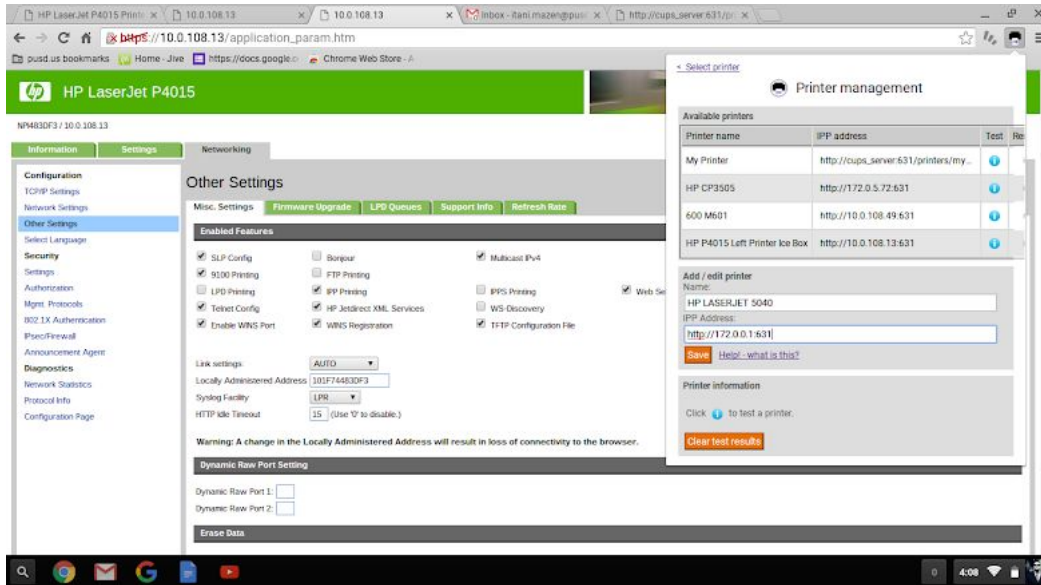
IPP ADDRESS:

in the ip address field use the following syntax:

h t t p://ip address of printer:631 <----Notice the port 631

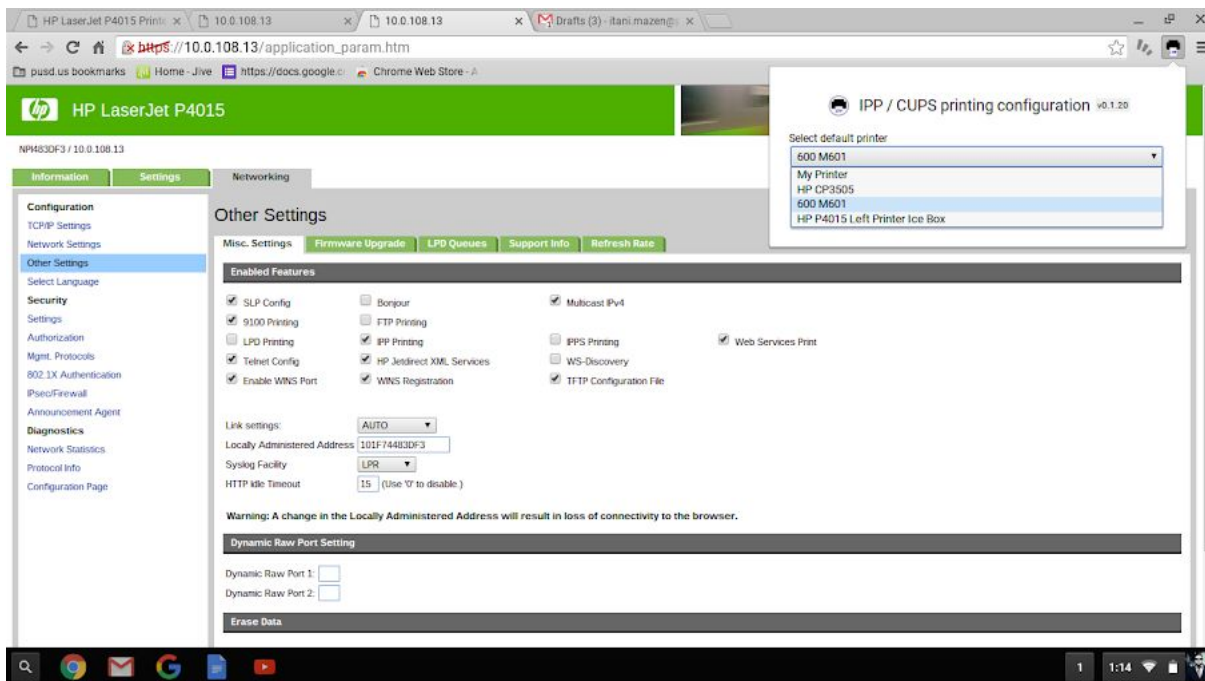
You can add more than one printer, the next step will show you how to choose the printer:

Example:

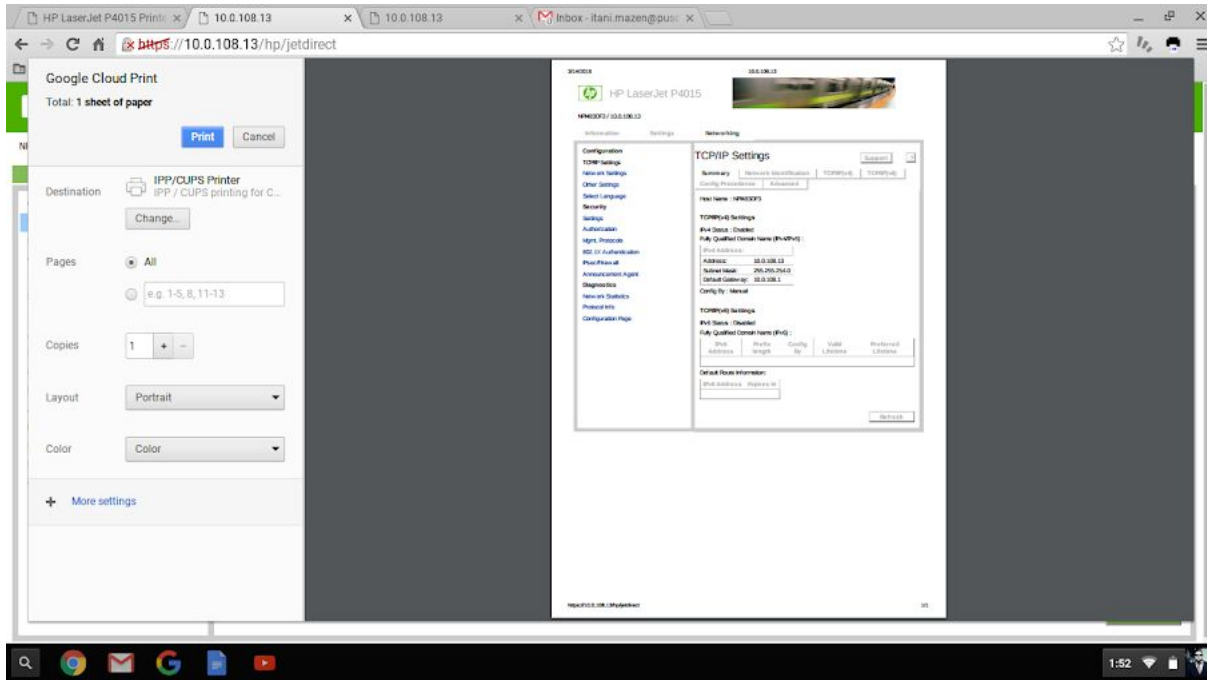


Step 5 - Select your printer:

To select a printer click on the printer icon at the top right of the page, if you have multiple printers they will be visible in the drop down:



To print click: **CTRL +P**



If you get an error make sure IPP is enabled on the printer

