

Sierra Madre Middle School

160 N. Cañon Ave, Sierra Madre, CA 91024



Campus Overview

Year Built: 2015
Site Size: 14.73 acres

Sierra Madre School is committed to providing a program which promotes academic, physical, emotional, and social growth for all our students within a safe and secure environment. Our goal is that these endeavors will foster high student academic achievement and creative thinking among our students and staff, to work together in harmony with parents and the community for the good of all students.

Recent Modernizations

- | | |
|----------------------------------|---|
| Measure TT
(2008-2021) | Construction of Administration/Library Building (A & B), Multipurpose Building C, Gymnasium Building (D), Two Classroom Buildings (E & F) |
| Energy Efficient Projects (2020) | Solar Array Installation |



“Sierra Madre Middle School’s Commitment to Excellence is founded on the tradition of our three Core Values of Academic Achievement, Creative Culture & Safe and Nurturing Environment.”

Principal, Garrett Newsom

Programs & Awards

- | | |
|--|----------------------------|
| • LEARNS | • Robotics |
| • Mandarin Dual Language Immersion Program | • Science Olympiad |
| • Math Academy | • Visual & Performing Arts |





Learner-centered environments engage students.

- Instructional spaces in a variety of sizes and shapes support engaging, participatory learning and instruction for individuals and small or large groups.
- Indoor and outdoor spaces stimulate learning and the imagination.
- Areas to display, perform, and celebrate student work support skill development in a variety of modalities.



Community and schools connect as partners.

- Spaces are adaptable and aligned to the needs of students, teachers, and families.
- School and community resources align to promote school safety for all students and families.
- Campuses foster a wide array of programs and partnerships that optimize community resources.



Accountability promotes continuous improvement.

- School facilities and interior layouts can accommodate change over time, to meet evolving educational needs and requirements.



Creativity and collaboration foster learning.

- School spaces facilitate collaboration between, among, and within groups.
- Students have easy access to tools and resources for learning in any space.
- Spaces can adapt to the scale and context of any learning endeavor.



Flexibility and adaptability are key to our success.

- Spaces are constructed to serve current and future demands.
- Learning environments support multiple learning styles, programs, student populations, and pedagogical approaches.
- Whenever possible, classroom design supports general rather than "specified" uses, so as to adapt easily if the need arises.



Sustainability is vital.

- Shared ownership is visible via spaces that are connected and transparent.
- Students, teachers, parents, and community help define and contribute to their school's visual, spatial, and architectural identity.

1. Technology Infrastructure

Provide ongoing effective technological integration of audio visual and tablet tools to enhance connectivity, classroom mobility and encourage student centered project-based learning.



2. State Mandated

Upgrades to code items including Accessible, AB 300, Net-Zero Performance and Fire Life & Safety requirements. Upgrades to pending heating, ventilation and air conditioning, plumbing, electrical, roofing, painting, and fencing items.



3. Safety & Security

Removal of hazardous materials. Improvements to student drop-off, parking, exterior lighting, fencing, fire alarms, emergency lighting, intrusion alarms, and controlled school entry security cameras.



4. Path to Zero Net Energy & Water Conservation

Incorporation of Energy Efficient systems to existing structures and new construction. Use of recycled water for irrigation.



5. Program Improvements

New construction for specific signature program for each campus. Upgrades to equipment to existing signature program spaces.



6. 21st Century Learning & Flexible Classrooms

Addition of flexible furniture, storage systems, and Audio Visual equipment to accommodate diverse learning methods.



7. Modernization & Reconfiguration

Upgrades to finishes, casework, doors, and windows. This includes auditorium and specialty classrooms equipment upgrades. Reconfiguration of interior layout to support new programming.



8. Physical Education & Play Area Improvements

Modernization, reconfiguration and/or addition of athletic facility programs to support the needs of the Physical Education & Athletic Programs.



9. Multi-Purpose Spaces & Food Service Improvements

Modernization, reconfiguration, and/or addition of multi-purpose spaces. This includes modernization of cafeterias, serveries, and multi-purpose spaces.



10. Site Improvements

Improvements to site utilities and service lines. Upgrades to paving, landscaping, curb appeal, turf fields, and exterior play areas.



11. Outdoor Learning Classrooms & Gardens

Addition or improvement of outdoor student learning programs, gardens, and gathering areas.



12. Intelligent New Construction

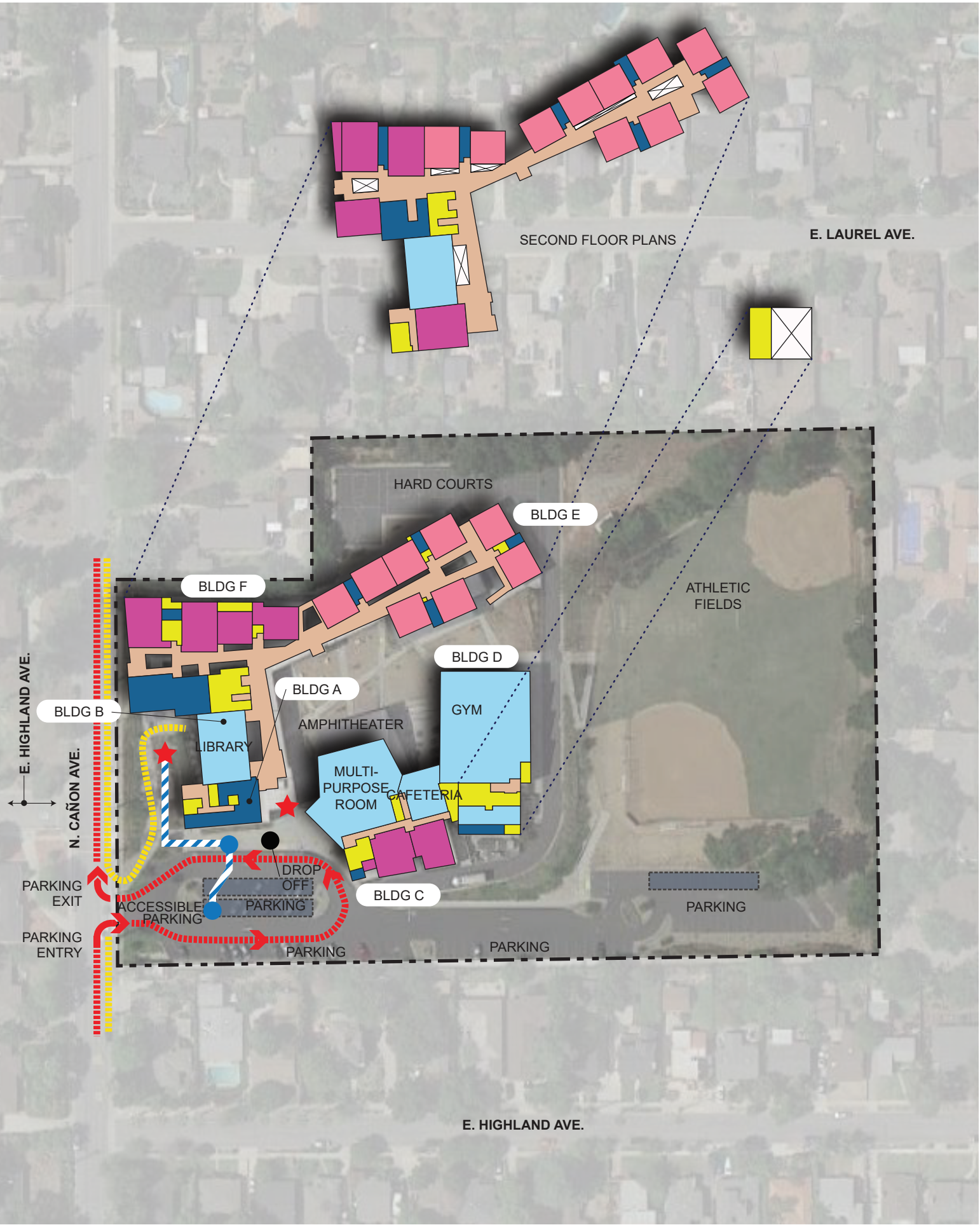
New permanent 21st century building construction that enhances campus energy performance, reduces maintenance, replaces legacy infrastructure, and/or temporary portable structures.





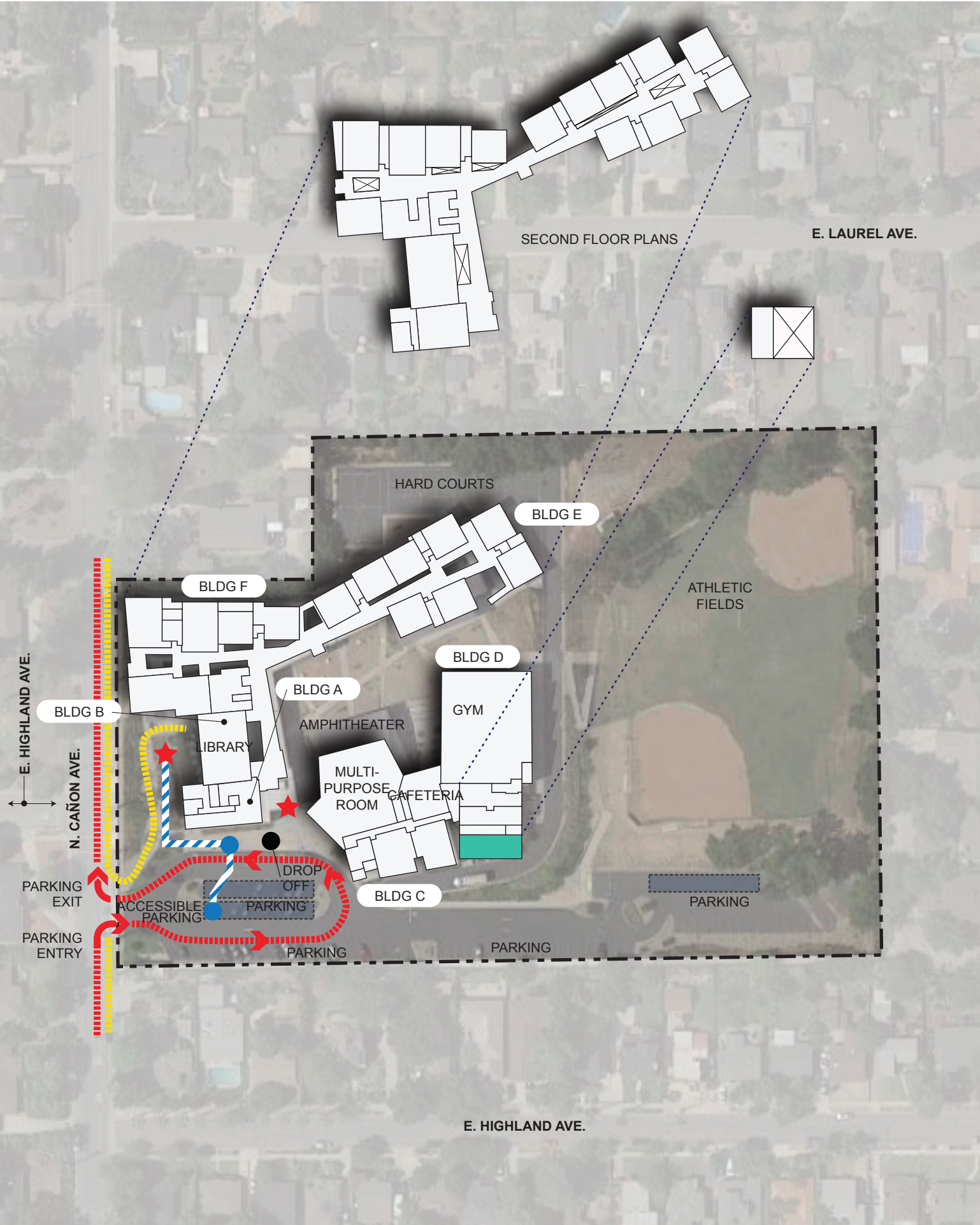
Assessment Summary

- 1. Technology Infrastructure
- 2. State Mandated Items
- 3. Safety & Security
 - Need corner guards at all exterior metal shingles at path of travel areas
- 4. Path to Zero Net Energy & Water Conservation
 - Current solar panels installation
- 5. Signature Program Improvements
- 6. 21st Century Learning & Flexible Classrooms
- 7. Modernization & Reconfiguration
- 8. Physical Education & Play Area Improvements
- 9. Multi-Purpose Spaces & Food Service Improvements
- 10. Site Improvements
 - Mitigate sound from exterior south chiller yard (semi-enclosed structure with absorption)
 - Mitigate sound from north electrical yard (absorption)
- 11. Outdoor Learning Classrooms & Gardens
- 12. Intelligent New Construction



- Legend**
- ★ Entry
 - Drop-off
 - School Bus Zone
 - Accessible Entry
 - Property Line
 - Vehicle
 - Pedestrian
 - Accessible Route
 - School Bus Zone
 - Solar Panels
 - Classrooms
 - Specialty Classrooms
 - Multi-Purpose Space
 - Support Space
 - Administration & Faculty
 - Outdoor Learning
 - Circulation
 - Existing Play Structure





Legend

- ★ Entry
- Drop-off
- School Bus Zone
- Accessible Entry
- Property Line
- Vehicle
- Pedestrian
- Accessible Route
- School Bus Zone
- Solar Panels
- x-x- Existing Fence
- x-x- New Fence
- New Building
- Modernization Spaces
- Circulation

SITE WORK

- Outdoor Learning
- Site & Landscaping
- Athletic Field
- Accessible Improvements
- Pervious Surface
- Play Area & Structure
- Shade Structure
- Hardcourts
- Parking
- Demo



Sierra Madre Middle School

Suggested Improvements

- 1. Technology Infrastructure
- 2. State Mandated Items
- 3. Safety & Security
 - Provide corner guards at all exterior metal shingles at path of travel areas
- 4. Path to Zero Net Energy & Water Conservation
- 5. Signature Program Improvements
- 6. 21st Century Learning & Flexible Classrooms
- 7. Modernization & Reconfiguration
- 8. Physical Education & Play Area Improvements
- 9. Multi-Purpose Spaces & Food Service Improvements
- 10. Site Improvements
 - Provide sound mitigation from exterior south chiller yard
 - Provide sound mitigation from north electrical yard
- 11. Outdoor Learning Classrooms & Gardens
- 12. Intelligent New Construction



ESTIMATED ASSESSMENT COST

Scope of Work Categories		Total
1	Technology Infrastructure	\$2,154,056
2	State Mandated (Access / ADA Compliance, Fire-Life-Safety and Structural)	-
3	Safety & Security	-
4	Path to Zero Net Energy & Water Conservation	-
5	Signature Program Improvements	-
6	21st Century Learning & Flexible Classrooms	-
7	Modernization & Reconfiguration	-
8	Physical Education & Athletic Facility Improvements	-
9	Multi-Purpose Spaces & Food Service Improvements	-
10	Site Improvements	\$125,000
11	Outdoor Learning Classrooms & Gardens	-
12	Intelligent New Construction	-
Subtotal Estimated Assessment Cost		\$2,279,056
Soft Project Cost (20%)		\$501,392
Hard & Soft Costs Subtotal		\$2,780,448
Escalation (Averaged, 5% per annum to midpoint of construction)		\$300,835
Overall Contingency (10%)		\$227,905
Total Estimated Assessment Cost		\$3,309,189





How Projects will be Established

WE ARE HERE

- Step 1 Create Needs Assessments for Each Site
- Step 2 Create Facilities Master Plan
- Step 3 Establish Priority Areas
- Step 4 Establish Project List
- Step 5 Prioritize Project List
- Step 6 Begin Project Planning and Construction

***Public input will be requested throughout the process**

