



# Marshall Fundamental

990 North Allen Ave, Pasadena, CA 91004



### Campus Overview

Year Built: 1925  
Site Size: 16.60 Acres

Marshall Fundamental School's unique Academy for Creative Industries (ACI) is a program that allows students to follow an academic track in the visual arts, theater, dance and music. AP Capstone is an internationally recognized diploma program in which students analyze and collaborate during a year focused on intensive research. The Innovative Projects course identifies a current civic concern for student exploration, leading to a final group presentation. Marshall received the Civic Learning Award of Excellence as a result of the continued civic engagement provided by this program.

### Recent Modernizations

Modernization Bond (1998-2008)	Construction of science building & parking lot. Upgrades to electrical and accessibility.
Measure TT (2008-2021)	Upgrades to library. Renovations to quad, landscape and old gym. New sports complex, classrooms and tennis courts. Replacement of HVAC, lighting controls and LED (with proposition 39).

### Programs & Awards

ACI Academy for Creative Industries



CIVIC LEARNING AWARD



PASADENA UNIFIED SCHOOL DISTRICT  
Our Children. Learning Today. Leading Tomorrow.



Marshall is a place where we all come together to celebrate hard work, success, diligence, and perseverance.

Principal, Mark Anderson





**Learner-centered environments** engage students.

- Instructional spaces in a variety of sizes and shapes support engaging, participatory learning and instruction for individuals and small or large groups.
- Indoor and outdoor spaces stimulate learning and the imagination.
- Areas to display, perform, and celebrate student work support skill development in a variety of modalities.



**Community** and schools connect as partners.

- Spaces are adaptable and aligned to the needs of students, teachers, and families.
- School and community resources align to promote school safety for all students and families.
- Campuses foster a wide array of programs and partnerships that optimize community resources.



**Accountability** promotes continuous improvement.

- School facilities and interior layouts can accommodate change over time, to meet evolving educational needs and requirements.



**Creativity and collaboration** foster learning.

- School spaces facilitate collaboration between, among, and within groups.
- Students have easy access to tools and resources for learning in any space.
- Spaces can adapt to the scale and context of any learning endeavor.



**Flexibility and adaptability** are key to our success.

- Spaces are constructed to serve current and future demands.
- Learning environments support multiple learning styles, programs, student populations, and pedagogical approaches.
- Whenever possible, classroom design supports general rather than "specified" uses, so as to adapt easily if the need arises.



**Sustainability** is vital.

- Shared ownership is visible via spaces that are connected and transparent.
- Students, teachers, parents, and community help define and contribute to their school's visual, spatial, and architectural identity.

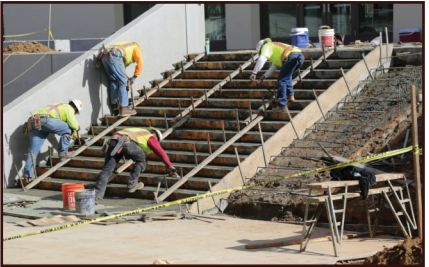
**1. Technology Infrastructure**

Provide ongoing effective technological integration of audio visual and tablet tools to enhance connectivity, classroom mobility and encourage student centered project-based learning.



**2. State Mandated**

Upgrades to code items including Accessible, AB 300, Net-Zero Performance and Fire Life & Safety requirements. Upgrades to pending heating, ventilation and air conditioning, plumbing, electrical, roofing, painting, and fencing items.



**3. Safety & Security**

Removal of hazardous materials. Improvements to student drop-off, parking, exterior lighting, fencing, fire alarms, emergency lighting, intrusion alarms, and controlled school entry security cameras.



**4. Path to Zero Net Energy & Water Conservation**

Incorporation of Energy Efficient systems to existing structures and new construction. Use of recycled water for irrigation.



**5. Program Improvements**

New construction for specific signature program for each campus. Upgrades to equipment to existing signature program spaces.



**6. 21st Century Learning & Flexible Classrooms**

Addition of flexible furniture, storage systems, and Audio Visual equipment to accommodate diverse learning methods.



**7. Modernization & Reconfiguration**

Upgrades to finishes, casework, doors, and windows. This includes auditorium and specialty classrooms equipment upgrades. Reconfiguration of interior layout to support new programming.



**8. Physical Education & Play Area Improvements**

Modernization, reconfiguration and/or addition of athletic facility programs to support the needs of the Physical Education & Athletic Programs.



**9. Multi-Purpose Spaces & Food Service Improvements**

Modernization, reconfiguration, and/or addition of multi-purpose spaces. This includes modernization of cafeterias, serveries, and multi-purpose spaces.



**10. Site Improvements**

Improvements to site utilities and service lines. Upgrades to paving, landscaping, curb appeal, turf fields, and exterior play areas.



**11. Outdoor Learning Classrooms & Gardens**

Addition or improvement of outdoor student learning programs, gardens, and gathering areas.



**12. Intelligent New Construction**

New permanent 21<sup>st</sup> century building construction that enhances campus energy performance, reduces maintenance, replaces legacy infrastructure, and/or temporary portable structures.







Assessment Summary

1. Technology Infrastructure

- Existing Network and Technology needs replacement

2. State Mandated Items

- ADA site-accessibility upgrades are required throughout the campus including walkways, ramps, stair, detectable warnings, handrails, drinking fountains, and signage.
- Air-conditioning is needed to be installed in the auditorium
- Replace windows as needed
- Storm Drainage issues to be addressed as drains to be cleaned near building entrances so water does not pond. Provide higher maintenance measures to prevent sub-drainage issues..
- Make site compliant with California Fire Code.
- Verify and confirm if all Building Seismic Upgrades are required
- Roof replacement as needed
- Restrooms throughout campus require refurbishment and ADA compliance
- Exterior painting needed throughout campus

3. Safety & Security

- Fencing & gates as need: Fencing along Casa Grande Street is not tall enough
- Need security system with entryway sensors and campus security cameras

4. Path to Zero Net Energy & Water Conservation

- There is a mixture of light fixture types, including LED, T8 and T12.
- Existing irrigation system is a conventional overhead spray irrigation system
- There are esource-intensive existing plantings like turf grass and plant material
- Expansive asphalt areas have implications for urban heat island.

5. Signature Program Improvements

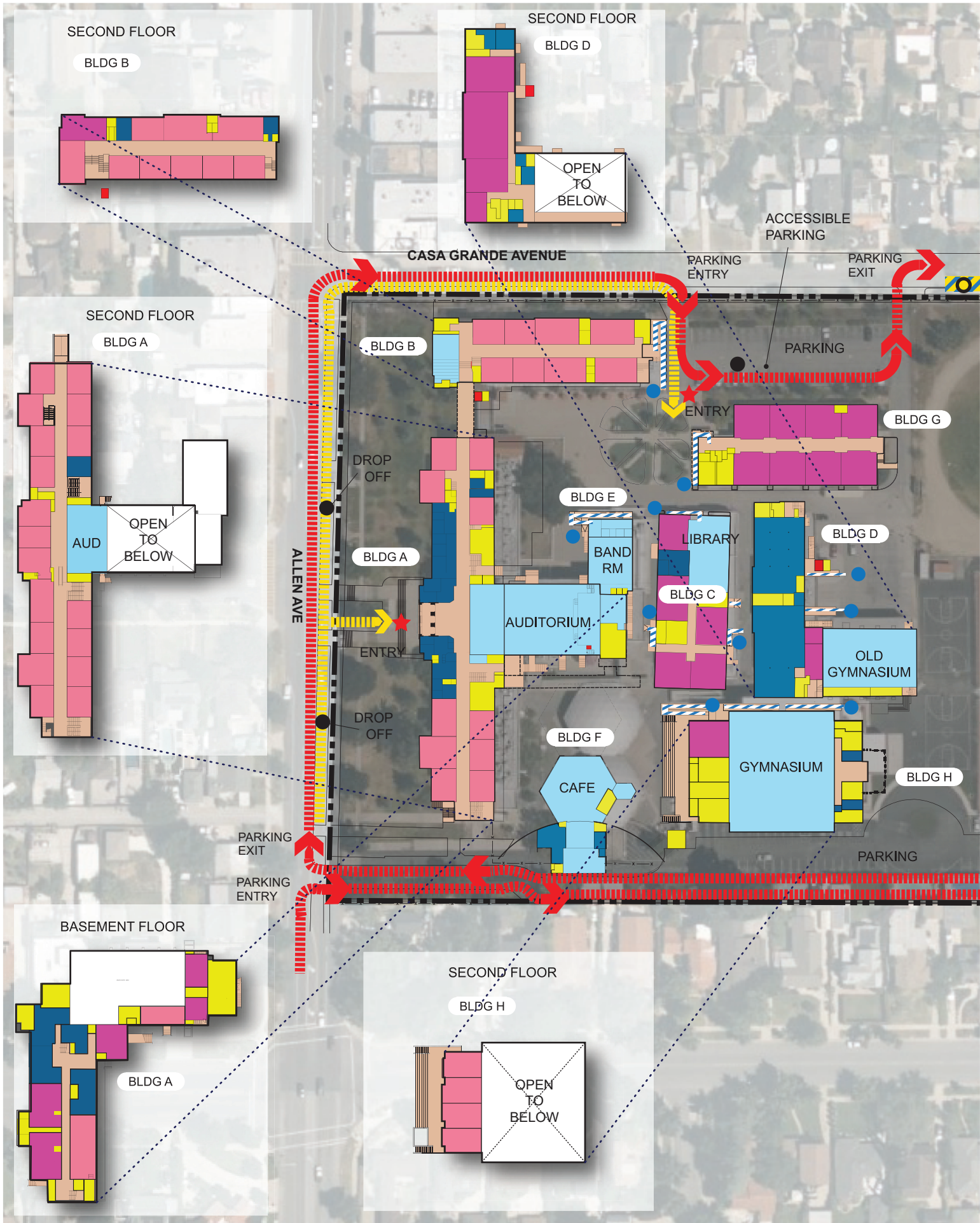
- Replace Building D (Old Gym) with new Athletic Facility and Academy of Creative Industries classroom building

6. 21st Century Learning & Flexible Classrooms

- Existing classrooms are traditional lecture layouts
- Current furniture, audio visual and technologies do not allow for flexible teaching strategies

7. Modernization & Reconfiguration

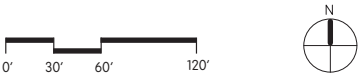
- Interior repainting as needed
- Upgrade built-in casework in all classrooms and storage rooms.
- Replace existing storage systems with upgraded, moveable independent storage systems.
- Provide additional acoustical finishes in all classrooms







- Legend**
- ★ Entry
  - Drop-off
  - School Bus Zone
  - Accessible Entry
  - Property Line
  - ◀ Vehicular
  - ◀ Pedestrian
  - ▨ Accessible Route
  - ▨ School Bus Zone
  - ▨ Solar Panels
  - ▨ Classrooms
  - ▨ Specialty Classrooms
  - ▨ Multi-Purpose Space
  - ▨ Support Space
  - ▨ Administration & Faculty
  - ▨ Outdoor Learning
  - ▨ Circulation
  - ▲ Existing Play Structure



# Marshall Fundamental School

## Assessment Summary

### 8. Physical Education & Play Area Improvements

- Replace outdated turf fields with new athletic and school program facilities.
- Provide new baseball and softball facilities including fencing, home plate.

### 9. Multi-Purpose Spaces & Food Service Improvements

- Remove old lunch shelter & kitchen which is old and not flexible & Replace

### 10. Site Improvements

- Primary drop-off and pick-up area is from Allen St. and Casa Grande St. to front of school. Recommend to add cross walk along Casa Grande to campus. Observed traffic congests along the busy Allen St. and Casa Grande St. There are no barriers in the parking lot or student drop-off turnarounds for safe student drop-off.
- Site regrading at SW corner of Building A is needed as site should slope away from building to prevent potential building flooding.
- Ponding was observed in some areas
- Asphalt pavement throughout campus is in need of repair or replacement.
- Replant landscaping & replace irrigation throughout campus, including school frontage.
- Improve campus tree canopy and existing landscape planting.
- Update existing bike facilities and provided additional bike parking for students

### 11. Outdoor Learning Classrooms & Gardens

- Existing hardscape areas lack definition and value as classroom or event space. Hardscape areas lack adequate shading.

### 12. Intelligent New Construction

- Existing Buildings are not Intelligent





Suggested Improvements

1. Technology Infrastructure

- Update Network and Technology Infrastructure

2. State Mandated Items

- Provide ADA site-accessibility upgrades throughout the campus including walkways, ramps, stair, detectable warnings, handrails, drinking fountains, and signage.
- Install new Air-conditioning in the Auditorium
- Replace windows as needed
- Storm Drainage issues to be addressed
- Provide higher maintenance measures to prevent sub-drainage issues..
- Make site compliant with California Fire Code.
- Building Seismic Upgrades are required
- Roof replacement as needed
- Restrooms refurbishment and ADA compliance throughout campus
- Exterior painting throughout campus

3. Safety & Security

- Replacement of chain link fencing / gate / hardware & retaining wall as needed
- Provide security system with entryway sensors and campus security cameras

4. Path to Zero Net Energy & Water Conservation

- All classrooms should be provided with energy efficient direct/ indirect LED with vacancy & automatic daylighting controls.
- Construct Photovoltaic system to generate more power.
- Install new generator for emergency power.
- Test the battery pack used for emergency light fixtures and replace.
- Replace resource-intensive existing plantings like turf grass and plant material with climate-appropriate plant species. New plants shall be durable, low maintenance, and require minimal watering.
- Update irrigation to meet or exceed State of California Model Water Efficient Landscape Ordinance (AB,1881).
- Reduce asphalt areas

5. Signature Program Improvements

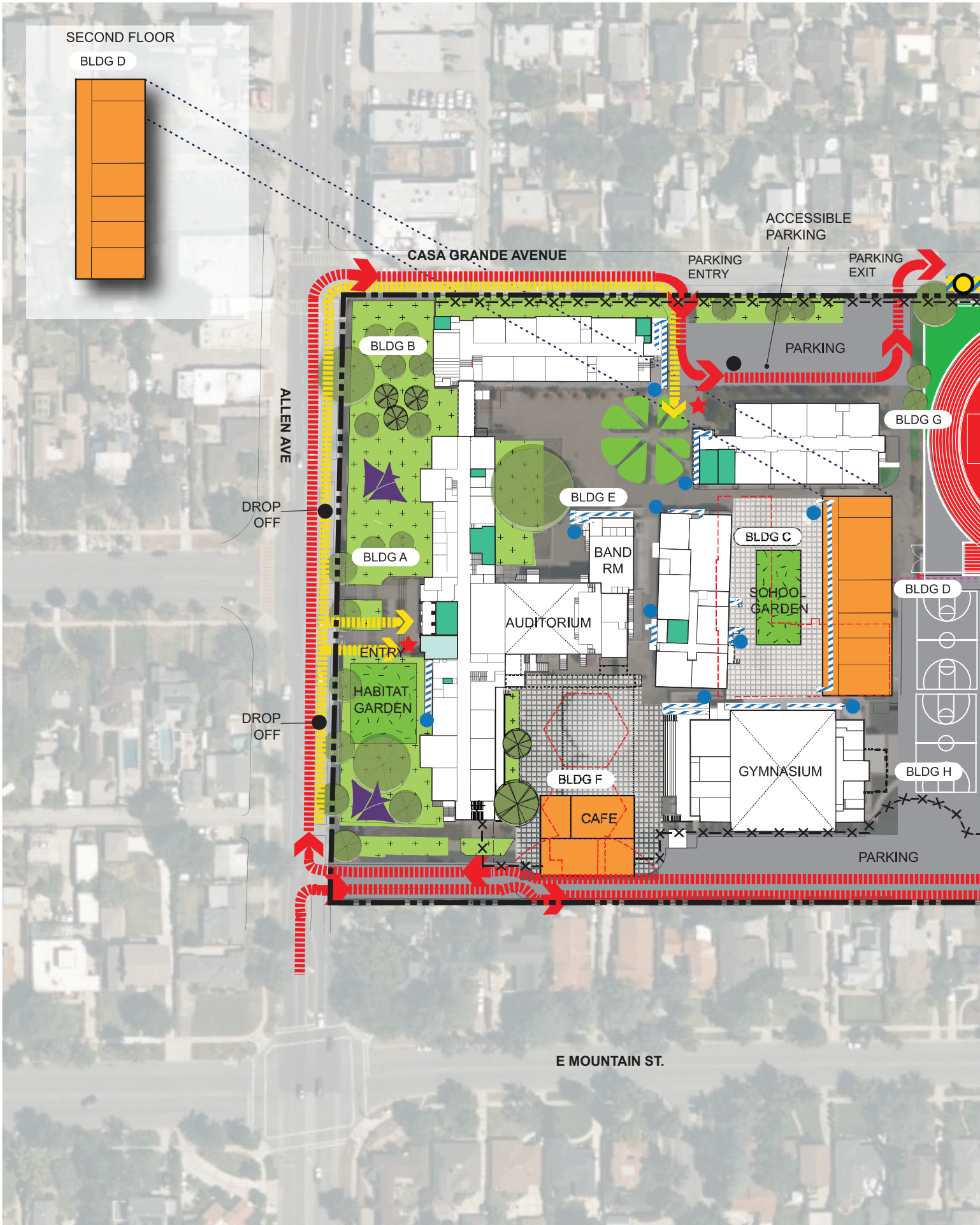
- Replace Building D (Old Gym) with new Athletic Facility and Academy of Creative Industries classroom building

6. 21st Century Learning & Flexible Classrooms

- New classrooms layouts and updated infrastructure should allow for 21st Century teaching and learning capabilities

7. Modernization & Reconfiguration

- Interior repainting as needed
- Upgrade built-in casework in all classrooms and storage rooms.
- Replace existing storage systems with upgraded, moveable independent storage systems.
- Provide additional acoustical finishes in all classrooms







Legend

- ★ Entry
- Drop-off
- School Bus Zone
- Accessible Entry
- Property Line
- ← Vehicular
- ← Pedestrian
- Accessible Route
- School Bus Zone
- Solar Panels
- x-x- Existing Fence
- x-x- New Fence
- New Building
- Modernization Spaces
- Circulation

SITE WORK

- Outdoor Learning
- Site & Landscaping
- Athletic Field
- Accessible Improvements
- Pervious Surface
- Play Area & Structure
- Shade Structure
- Hardcourts
- Parking
- Demo



# Marshall Fundamental School

## Suggested Improvements

### 8. Physical Education & Play Area Improvements

- Replace outdated turf fields with new athletic and school program facilities.
- Provide new baseball and softball facilities including fencing, home plate.

### 9. Multi-Purpose Spaces & Food Service Improvements

- Replace old lunch shelter & kitchen

### 10. Site Improvements

- Recommend to add cross walk along Casa Grande to campus.
- Provide traffic barriers in the parking lot for student drop-off turnarounds for safe student drop-off.
- Regrade site at SW corner of Building A
- Mitigate ponding as required
- Replace Asphalt pavement throughout campus
- Replant landscaping & replace irrigation throughout campus, including school frontage.
- Prune existing trees and remove dead or declining planting.
- Replace removed planting with climate-appropriate, low-maintenance planting
- Update existing bike facilities and provided additional bike parking for students

### 11. Outdoor Learning Classrooms & Gardens

- Re-configure hardscape areas to accommodate more programs and events
- Improve campus tree canopy and provide shade structures where trees are not appropriate

### 12. Intelligent New Construction

- Addition of new Intelligent facilities to support school programs as applicable







ESTIMATED ASSESSMENT COST		
Scope of Work Categories		Total
1	Technology Infrastructure	\$2,086,020
2	State Mandated (Access / ADA Compliance, Fire-Life-Safety and Structural)	\$10,430,100
3	Safety & Security	\$1,251,612
4	Path to Zero Net Energy & Water Conservation	\$834,408
5	Signature Program Improvements	\$2,086,020
6	21st Century Learning & Flexible Classrooms	\$4,172,040
7	Modernization & Reconfiguration	\$2,086,020
8	Physical Education & Athletic Facility Improvements	\$10,430,100
9	Multi-Purpose Spaces & Food Service Improvements	\$6,258,060
10	Site Improvements	\$5,924,160
11	Outdoor Learning Classrooms & Gardens	\$1,045,440
12	Intelligent New Construction	\$2,086,020
Subtotal Estimated Assessment Cost		\$48,690,000
Soft Project Cost (20%)		\$10,711,800
Hard & Soft Costs Subtotal		\$59,401,800
Escalation (Averaged, 5% per annum to midpoint of construction)		\$6,427,080
Overall Contingency (10%)		\$4,869,000
Total Estimated Assessment Cost		\$70,697,880





# How Projects will be Established

WE ARE HERE

**Step 1 Create Needs Assessments for Each Site**

**Step 2 Create Facilities Master Plan**

**Step 3 Establish Priority Areas**

**Step 4 Establish Project List**

**Step 5 Prioritize Project List**

**Step 6 Begin Project Planning and Construction**

**\*Public input will be requested throughout the process**