

# Eugene Field Elementary School

3600 E. Sierra Madre Blvd. Pasadena, CA 91107



## Campus Overview

Year Built: 1949

Site Size: 7.99 Acres

A key feature of Eugene Field Elementary School is its attractive curb-appeal as a result of its original, relatively un-altered, historical Post-war architectural building style coupled with ample and beatifully landscaped lawns along Sierra Madre Blvd.

The school offers the Farm-to-School Program with instruction occuring in the classroom and in the school garden, Mandarin Dual Language Immersion Program, Innovation Club, Chess Club, Science Olympiad, and STEAM enrichment instruction.

## Recent Modernizations

Modernization Bond  
(1998-2008)

Technology Infrastructure Upgrades  
New Central Chiller Plant  
Lower Field Landscape Irrigation

Measure TT  
(2008-2021)

Modernization of Multi-Purpose  
Building, Kitchen Facility, Classroom  
Patios and Site Work  
New Portable Classroom Buildings  
New Playground Structure

Energy-Efficient  
Projects  
(2020)

-

## Programs and Awards



Principal, Daniel Bagby

**“At Field Elementary, our teachers are trained to implement a Balanced Literacy approach in English and Mandarin /Simplified Chinese.”**



Pasadena Unified School District



**PASADENA UNIFIED SCHOOL DISTRICT**  
*Our Children. Learning Today. Leading Tomorrow.*





Learner-centered environments engage students.

- Instructional spaces in a variety of sizes and shapes support engaging, participatory learning and instruction for individuals and small or large groups.
- Indoor and outdoor spaces stimulate learning and the imagination.
- Areas to display, perform, and celebrate student work support skill development in a variety of modalities.



Community and schools connects as partners.

- Spaces are adaptable and aligned to the needs of students, teachers, and families.
- School and community resources align to promote school safety for all students and families.
- Campuses foster a wide array of programs and partnerships that optimize community resources.



Accountability promotes continuous improvement.

- School facilities and interior layouts can accommodate change over time, to meet evolving educational needs and requirements.



Creativity and collaboration foster learning.

- School spaces facilitate collaboration between, among, and within groups.
- Students have easy access to tools and resources for learning in any space.
- Spaces can adapt to the scale and context of any learning endeavor.



Flexibility and adaptability are key to our success.

- Spaces are constructed to serve current and future demands.
- Learning environments support multiple learning styles, programs, student populations, and pedagogical approaches.
- Whenever possible, classroom design supports general rather than "specified" uses, so as to adapt easily if the need arises.



Sustainability is vital.

- Shared ownership is visible via spaces that are connected and transparent.
- Students, teachers, parents, and community help define and contribute to their school's visual, spatial, and architectural identity.

1. Technology Infrastructure

Upgrades to network infrastructure and added technology resources for student access.



2. State Mandated

Upgrades to code items including Accessible, AB 300, Net-Zero Performance and Fire Life & Safety requirements. Upgrades to pending heating, ventilation and air conditioning, plumbing, electrical, roofing, painting, and fencing items.



3. Safety & Security

Removal of hazardous materials. Improvements to student drop-off, parking, exterior lighting, fencing, fire alarms, emergency lighting, intrusion alarms, and controlled school entry security cameras.



4. Path to Zero Net Energy & Water Conservation

Incorporation of high performing Energy Efficient systems to the site, existing structures and new construction. Use of recycled water for irrigation.



5. Program Improvements

New construction for specific signature program for each campus. Upgrades to equipment to existing signature program spaces.



6. 21st Century Learning & Flexible Classrooms

Addition of flexible furniture, storage systems, and Audio Visual equipment to accommodate diverse learning methods.



7. Modernization & Reconfiguration

Upgrades to finishes, casework, doors, and windows. This includes auditorium and specialty classrooms equipment upgrades. Reconfiguration of interior layout to support new programming.



8. Physical Education & Play Area Improvements

Modernization, reconfiguration and/or addition of athletic facility programs to support the needs of the Physical Education & Athletic Programs.



9. Multi-Purpose Spaces & Food Service Improvements

Modernization, reconfiguration, and/or addition of multi-purpose spaces. This includes modernization of cafeterias, serveries, and multi-purpose spaces.



10. Site Improvements

Improvements to site utilities and service lines. Upgrades to paving, landscaping, curb appeal, turf fields, and exterior play areas.



11. Outdoor Learning Classrooms & Gardens

Addition or improvement of outdoor student learning programs, gardens, and gathering areas.



12. Intelligent New Construction

Addition of new facilities to support school needs.





1. Technology Infrastructure

- Lack of projection equipment in classrooms.
- Existing Network and Technology needs replacement.

2. State Mandated Items

- Inadequate accessibility elements at parking, campus, and buildings.
- Outdated fire alarm system.
- Seismic evaluation as required.

3. Safety & Security

- Older perimeter campus fencing, gates, and hardware.
- Lack of security system at entryways and throughout campus.
- Defective or faulty existing hardware.

4. Path to Zero Net Energy & Water Conservation

- Tired and inefficient existing restroom fixtures.
- Non-functioning and inefficient existing lighting fixtures.
- Old and inefficient existing HVAC system.
- Existing single glazed windows.
- Inefficient landscape and irrigation system.

5. Programs Improvements

- Need for new permanent classrooms to replace modular buildings.

6. 21st Century Learning & Flexible Classrooms

- Outdated classroom furniture layout and storage systems.

7. Modernization & Reconfiguration

- Damaged or broken finishes and furnishings at classrooms.
- Deteriorated restroom fixtures and components.
- Deteriorated existing walkway covers.

8. Physical Education and Play Area Improvements

- Poor irrigation system at natural turf play field.
- Hard court play area need improvements.

9. Multi-Purpose Spaces & Food Service Improvements

- Old covered lunch shelter needs replacement.

10. Site Improvements

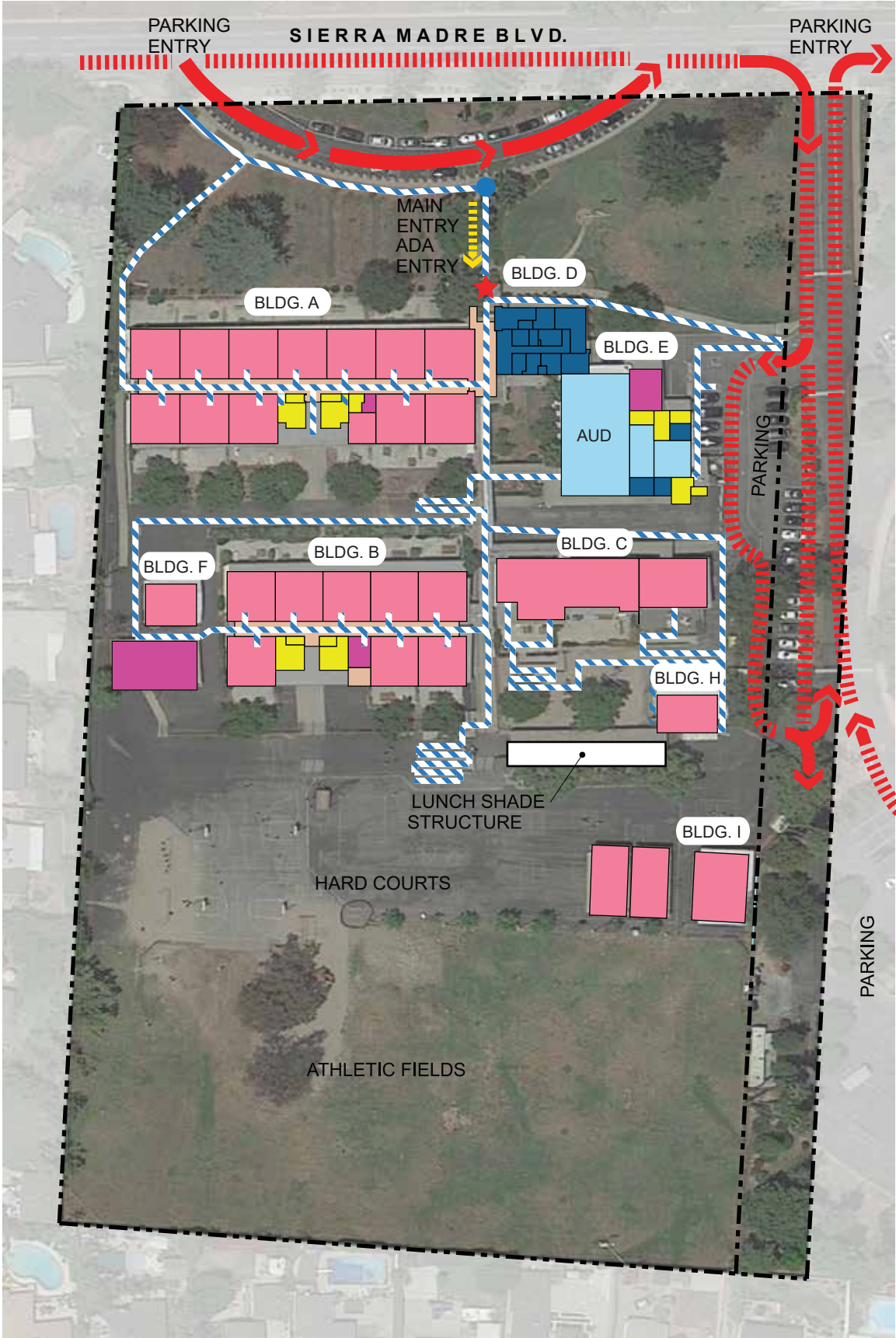
- Main water and fire service line need upgrade.
- Distressed landscape and malfunctioning irrigation system.
- Inadequate drainage/storm drain mitigation.

11. Outdoor Learning Classrooms & Gardens

- Existing outdoor patios can be used as learning space.

12. Intelligent New Construction

- Existing buildings are not Intelligent.



Legend :

- ★ Entry
- Drop-off
- School Bus Zone
- Accessible Entry
- Property Line
- ← Vehicular
- ← Pedestrian
- Accessible Route
- School Bus Zone
- Solar Panels
- Classrooms
- Specialty Classrooms
- Multi-Purpose Space
- Support Space
- Administration & Faculty
- Outdoor Learning
- Circulation
- Existing Play Structure





Suggested Improvements

1. Technology Infrastructure

- Provide state of the art audio visual equipment in classrooms.
- Replace existing technology network with current up to date devices.

2. State Mandated Items

- Address accessibility elements at parking, campus, and buildings.
- Update fire alarm and fire sprinkler systems.
- Evaluate and address buildings for seismic safety as required.

3. Safety & Security

- Replace perimeter campus fencing, gates, and hardware as required.
- Install security system with entryway sensors and campus security cameras.
- Hardware replacement as required.

4. Path to Zero Net Energy & Water Conservation

- Replace lighting fixtures at most buildings with LED energy efficient lighting.
- Replace HVAC systems with more efficient units.
- Install new landscape and irrigation system throughout campus.

5. Programs Improvements

- New permanent classrooms to replace existing modular buildings.

6. 21st Century Learning & Flexible Classrooms

- Provide flexible classroom furniture and storage systems.

7. Modernization & Reconfiguration

- Classrooms modernization.
- Restrooms modernization.
- Administration area modernization.

8. Physical Education and Play Area Improvements

- New irrigation system for turf play field.
- Hard Court play area improvements.

9. Multi-Purpose Spaces & Food Service Improvements

- New lunch shelter.

10. Site Improvements

- Landscape and irrigation improvements.
- New lunch shelter.
- Drainage/Storm drain mitigation as required.

11. Outdoor Learning Classrooms & Gardens

- Utilization of existing classroom patios for outdoor learning space.

12. Intelligent New Construction

- Addition of new INTELLIGENT facilities to support school programs.
- Monitor and improve integrated Building Management System.

Legend :

- ★ Entry
- Drop-off
- School Bus Zone
- Accessible Entry
- Property Line
- ← Vehicular
- ← Pedestrian
- Accessible Route
- School Bus Zone
- Solar Panels
- x-x- Existing Fence
- x-x- New Fence
- New Building/Classroom
- Modernization Spaces
- Circulation

Site Work :

- Outdoor Learning
- Site & Landscaping
- Athletic Field
- ADA Site Improvements
- Pervious Surface
- Play Area & Structure
- Shade Structure
- Hardcourts
- Parking
- Demo
- Circulation







ESTIMATED RECOMMENDED PROJECT COST		
Scope of Work Categories		Total
1	Technology Infrastructure	\$347,112.00
2	State Mandated (Access / ADA Compliance, Fire-Life-Safety and Structural)	\$3,124,008.00
3	Safety & Security	\$208,267.20
4	Path to Zero Net Energy & Water Conservation	\$138,844.80
5	Signature Program Improvements	\$347,112.00
6	21st Century Learning & Flexible Classrooms	\$694,224.00
7	Modernization & Reconfiguration	\$694,224.00
8	Physical Education & Athletic Facility Improvements	\$347,112.00
9	Multi-Purpose Spaces & Food Service Improvements	\$694,224.00
10	Site Improvements	\$3,871,830.75
11	Outdoor Learning Classrooms & Gardens	\$683,264.25
12	Intelligent New Construction	\$347,112.00
	Subtotal Estimated Recommended Construction Cost	\$11,497,335.00
	Soft Project Cost (20%)	\$2,,99,467.00
	Hard & Soft Costs Subtotal	\$13,796,802.00
	Escalation (Averaged, 5% per annum to midpoint of construction)	\$1,494,653.55
	Overall Contingency (10%)	\$1,149,733.50
	Total Estimated Recommended Project Cost	\$16,441,189.05

