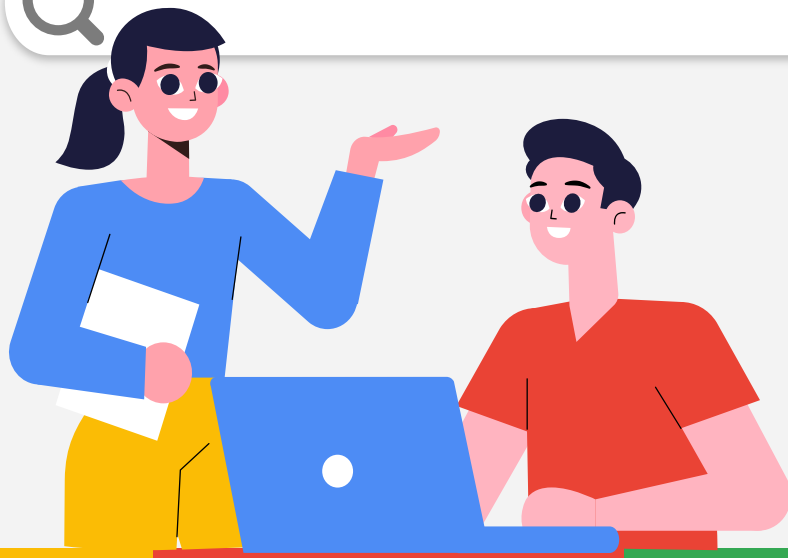
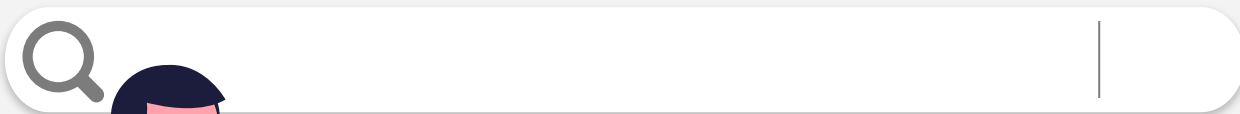


McKinley Return 6th - 8th Grades



🔍 **March 19, 2020**



Superintendent McDonald, with guidance from the Pasadena Health Department, issued a Stay at Home Directive for all PUSD students and employees.



Tonight's Takeaways:



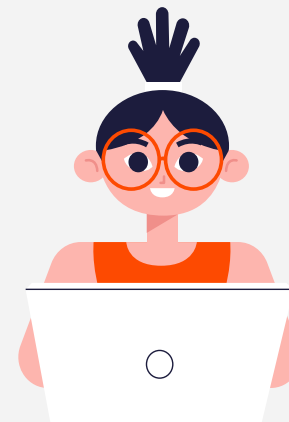
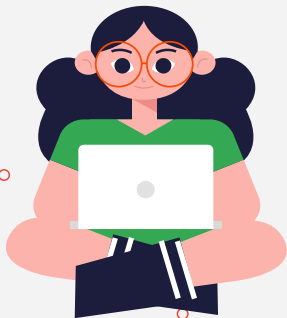
1

- **LEARNS Program**
- **Day in the Life**
- **Campus Entry/Exits**
- **Classroom Configurations**
- **Schedules**
- **Health and Safety Protocols**

2

3

4



LEARNs



McKinley
LEARNs
After School Program

Tuesdays - Fridays
12:55 - 5:00 PM

3rd-5th
Grade Start
Date:
**TUESDAY, APRIL
20TH, 2021**

Applications are open **but
spaces are limited.** In order
to be apart of LEARNs, School
Survey **MUST** be completed for
In-Person Return.

**Apply
Today!**

Applications are found at www.pusd.us/learns
Look for McKinley's Application Link

<https://www.pusd.us/learns>

M

T

X

T

F



Overview



1

• Return to School KLRN Pasadena Unified

- Self Assessment

- Mask Requirements

- Entry Screening



- Desks 6 feet apart

- Ventilation

- Grab n Go Lunch

2

3

4

McKinley School



Information Letter

Be on the lookout for an information letter coming from the McKinley School office. This letter will contain important information regarding your student's return to in-person learning.

[Sample Link](#)



Parent Agreement

- Make sure your child(ren) understands that they must follow all COVID19 safety protocols. This includes, and is not limited to wearing a facemask at all times, staying 6ft apart from others, washing hands and any other directives from school site personnel. All regular school rules must also be followed.
- Bring your child to school on time to your assigned gate. Parents must wait with their child(ren) to check in and answer the screening questions. Late students will need to enter through the front entrance on Oak Knoll with their parents/guardian.
- Students must be picked up on time every day, at the designated grade level exit points.
- Be available within 30 minutes to pick up your child, if your child shows symptoms or becomes ill during the day.
- Send your child to school prepared, with his/her Chromebook charged and necessary materials. Sharing of materials is prohibited.
- Make sure students arrive at school having had a healthy breakfast.
- Pre screen your child before leaving the house. Students who are not feeling well and show any symptoms will not be allowed to attend in person school that day.
- **Cell Phones:** Student devices must be stored away during school hours. Cell phones must be off and in the students' backpacks at all times while on campus.

● Sample Link

School Days/Times



1

DAYS:

Mondays: Distance
learning for all
students

Tuesdays to Fridays:
Hybrid Simultaneous

START TIME:

8:15AM

END TIME/PICK UP FOR IN-PERSON STUDENTS:

12:10PM

2

3

4



Campus Entry




1

All 6-8th grade students will ENTER on El Molino at the Gymnasium Gates, in front of the Gymnasium.

2

Gates Open at: 7:55a & 12:00p

-  All 6-8th students will:
- Have a temperature check
 - Screened with standardized COVID19 questions
 - Administrator: Dr. Bailey & Ms. Chan
 - Aide: Carter, J.

3

4

Campus Exits



1

All 6-8th grade students will **EXIT** at the **EL MOLINO GATE** in front of the Gymnasium.

2

- Gates will open at 12:10p for students to EXIT.
- ● All 6-8th students will get a grab 'n go lunch upon exit.

3

****Please Note- Students are to return VIRTUALLY for their Personalized Learning Time (PLT) at 12:45p.***

4



Alignment with PUSD Protocols



1

All Grades 6-8 students:

- Will be screened with a temperature check; parents **MUST** wait for clearance in the car.
- Parents are **NOT** allowed on campus, unless emergency or a prior confirmed appointment.
- All students **MUST** wear a mask at all times.

2

3

4





Scenario 1: NO Cohorts

In this scenario, **less than 14 students have elected to return to in-person learning per classroom**. Because of this, students are able to attend in-person from Tuesday to Friday.











Synchronous time will **remain the same at 240 minutes for Tuesday to Friday**.

Monday	Tuesday	Wednesday	Thursday	Friday
 				

Scenario 2: Cohorts A and B

	Cohort A	Cohort B
At School		
At Home		

In this hybrid model, schools will operate in a reduce capacity(25% - 50%) with safety and distance learning at home to keep class sizes smaller. Thorough cleaning of classrooms will take place between cohorts of students.

	Monday	Tuesday	Wednesday	Thursday	Friday
A					
B					

McKinley 6-8 Bell Schedule

Teacher Start Time (7:55am)				
Start of School (8:15am)				
Tu-Fri.	Tuesday	Wednesday	Thursday	Friday
8:15 - 9:15 (60m)	Period 1	Period 4	Period 1	Period 4
	Synchronous Learning Time	Synchronous Learning Time	Synchronous Learning Time	Synchronous Learning Time
	Passing			
	Nutrition Break			
	Passing			
9:35 - 10:35 (60m)	Period 2	Period 5	Period 2	Period 5
	Synchronous Learning Time	Synchronous Learning Time	Synchronous Learning Time	Synchronous Learning Time
	Passing			
	Advisory			
	Passing			
11:10 - 12:10 (60m)	Period 3	Period 6	Period 3	Period 6
	Synchronous Learning Time	Synchronous Learning Time	Synchronous Learning Time	Synchronous Learning Time
12:10 - 12:40 (30m)	Lunch-(Student Grab/Go)(exit campus)			





Summary of Bell Schedule

<u>MONDAY</u> (a/b)	<u>TUESDAY</u>	<u>WEDNESDAY</u>	<u>THURSDAY</u>	<u>FRIDAY</u>
	P: 1,2, Adv, 3	P: 4,5, Adv, 6	P: 1,2, Adv, 3	P: 4,5, Adv, 6
8:15a - 10:25a	8:15a - 12:10p	8:15a - 12:10p	8:15a - 12:10p	8:15a - 12:10p

- 12:10 - Lunch GRAB n Go
- 12:45p - Student resumes - (PLT) - Virtually
 - 12:45 - 1:15p - Periods 1 or 4
 - 1:15 - 1:35p - Periods 2 or 5
 - 1:35 - 1:55p - Periods 3 or 6

What about Lunch?

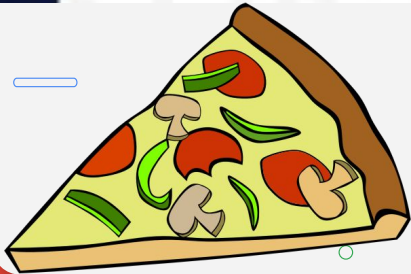


M

School Meals for Students & Staff

Students

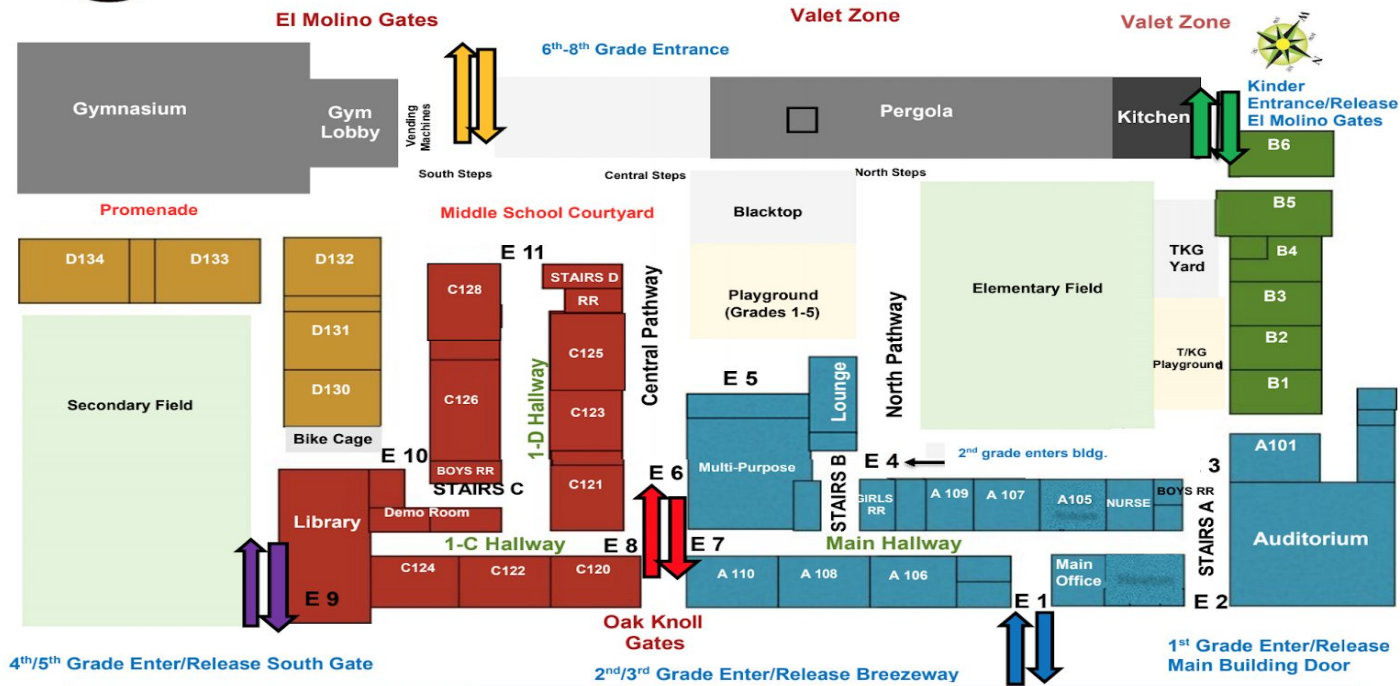
- “Grab & Go” Meals at student exits
 - Students receive lunch and breakfast for the next morning
 - Breakfast is to be eaten at home prior to coming to school
- Drive-thru “Grab & Go” Meals also provided for students who remain in remote learning
- Snacks and Supper. Weekend meals.



McKinley Entrance/Exits



McKinley School Campus Map



Entrance/Release:
 Kinder: El Molino gates
 1st Grade: Main Building Entrance
 2nd/3rd Grade: Breezeway
 3rd/4th Grade: South Gate
 6th-8th Grade: El Molino Gym Gates

CRH072716



Classroom Configurations



1

• 1. Class Cohorts

All Middle School students will be grouped into A/B Cohorts

- Group A: Tues & Wed
- Group B: Thurs & Fri

2

3

4

Classroom safety



1

All 6th - 8th grade classes have the following:

- Air Purifiers
- Desk 6ft apart
- Plexiglass for Teacher's Desk
- Wipes/Hand Sanitizer/Gloves
- McKinley Masks & Face Shields
- Weekly Deep Cleaning (Fogging)
- Scheduled Hand Washes/Sanitize



2

3

4

Health Screening Protocols for Students and Staff

Before leaving home and entering school, ask yourself or your child these questions:

- Do I have a fever?
- Do I have a cough?
- Am I experiencing shortness of breath or difficulty breathing?
- Am I experiencing any other symptoms?
- Have I been in contact with someone who has tested positive for COVID-19 in the last 10 days?
- In the last two weeks, have I been in close contact with someone who has COVID-19?

If the **employee** responds “yes” to any of these questions, the employee must stay home and must contact direct supervisor, Human Resources, and recommended to contact doctor.

If a **student** responds “yes” to any of these questions, the student will be sent home or to the isolation area to wait for their parent or guardian.

Isolation Policies

Any **employee** showing symptoms consistent with COVID-19 *while at work* needs to:

1. Notify direct supervisor
2. Go home
3. Recommended to notify doctor and request to get tested.

Any **student** showing symptoms consistent with COVID-19 *while at school* needs to be:

1. Guided to the isolation area with trained staff.
2. Picked up by parent or guardian.

Quarantine Policies

“Close Contact” - being within 6 ft or more than 15 minutes over a 24 hour period, even if wearing a mask, or had unprotected direct contact with body fluids or secretions (i.e. sneezed or coughed upon).

Any **employee or student** who has been in **close contact** with someone diagnosed with or suspected to have COVID-19 is expected to:

1. Home quarantine (10 days)
2. Notify HR and direct supervisor (employee)
3. Notify doctor (recommendation)
4. Get tested (recommendation)

“Home quarantine” - method of slowing its spread through staying at home and away from other people.

Technology



What students bring each day:

- Students attending in-person will bring Chromebooks each day
 - If a student forgets their device, each school site will only have 1 cart of loaner devices.
- Students attending online will continue to use their devices as usual

Everyone must wear a face mask

Everyone must sign in/out

- Limited number of students
- Site Staff only
- Entrance/exit protocols
- Visitors - essential workers only
- Parents - remote as much as possible or by appointment





Questions?



<https://tinyurl.com/mckinleyreopening2021>

M

T

X

T

F