

Math 2

MS. NAVA

---

# Who am I?

My name is Ms. Nava. This is my third year at Blair and I love it! I teach math 2 and math 2 honors.



I'm the girls water polo and swim team coach. I work with great kids to improve their aquatic skills.



In my free time I love to travel. Unfortunately, it will be some time before I get to travel once again.. :(



I'm the Blair ASB advisor. I lead a terrific group of young leaders who aspire to improve their school and community.

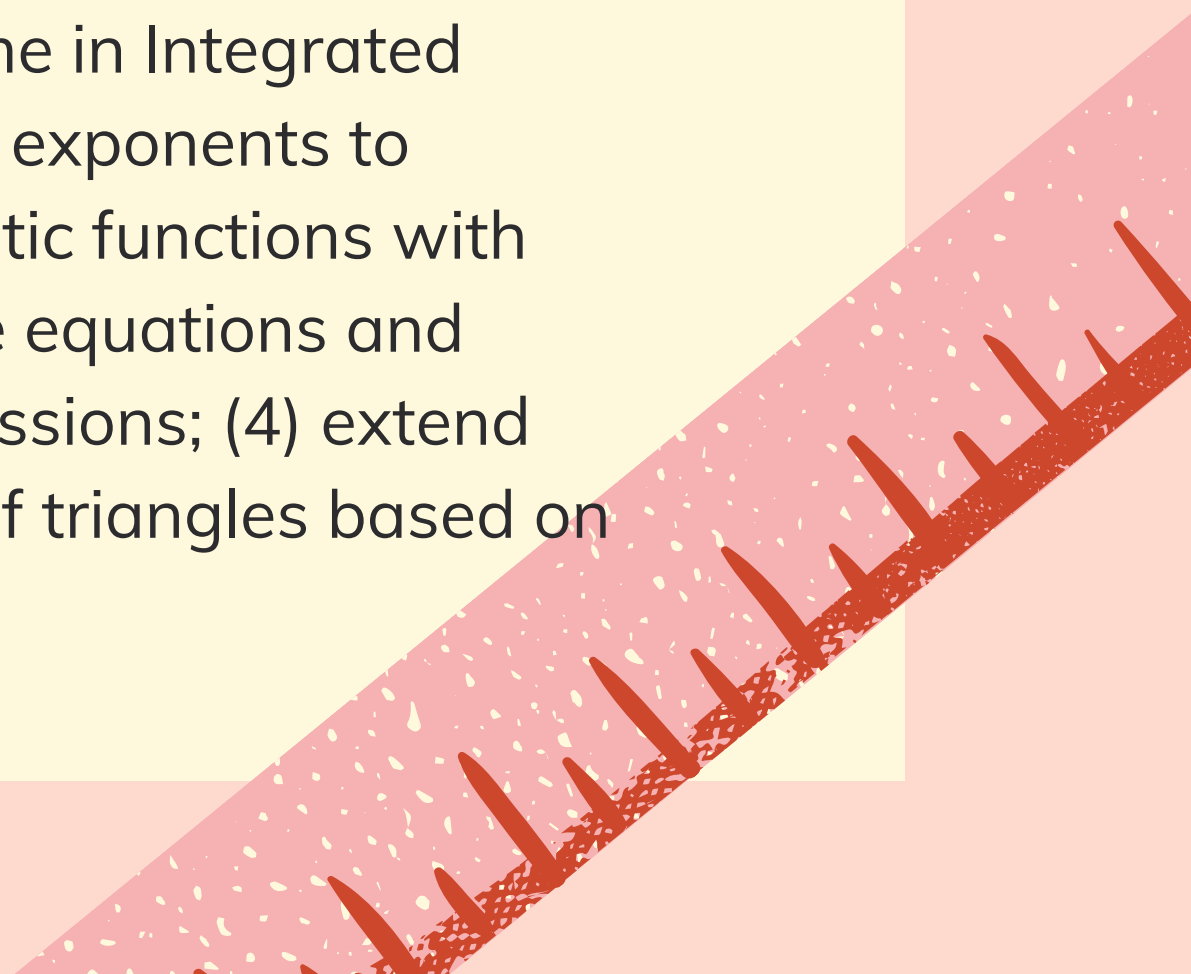


# Course Description

---



The focus of the Mathematics II course is on quadratic expressions, equations, and functions; comparing their characteristics and behavior to those of linear and exponential relationships from Mathematics I. This course includes standards from the conceptual categories of Number and Quantity, Algebra, Functions, Geometry, and Statistics and Probability. The instructional time in Integrated Math 2 is focused on five critical areas: (1) extend the laws of exponents to rational exponents; (2) compare key characteristics of quadratic functions with those of linear and exponential functions; (3) create and solve equations and inequalities involving linear, exponential, and quadratic expressions; (4) extend work with probability; and (5) establish criteria for similarity of triangles based on dilations and proportional reasoning.





# Classroom Expectations

- **Be on time**
- **Join the call mute**
- **Be respectful**
- **Come prepared**
- **Don't write inappropriate and irrelevant things in the chat**

Students are expected to join class every class meeting prepared to learn.  
Students should the have appropriate materials for each class meeting.

## Grading Policy:

Homework -----10%

Classwork/Khan Academy -----20%

Quizzes -----30%

Tests and Projects -----40%



# Math 2

Latework: work is accepted until the unit test . Points will be deducted for late work.

## Classwork

Do Nows

Practice exercises

## Homework

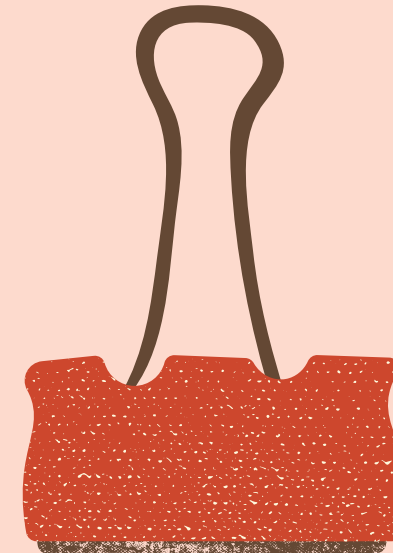
Assignments are assigned every

class but submitted weekly.

## Assessments

Quizzes, tests and projects are

different assessments we will have in class.







# Notes

A blank copy of the pdf  
and filled in notes are  
posted in Canvas under  
the pages tab.

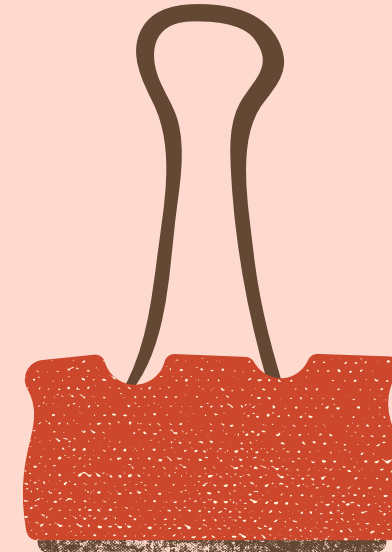
## Unit 1 Geometric Figures and Proof



Date	Title	Link
8/18/20	Circle Parts	<a href="#">parts of circles notes BLANK.pdf</a> 
		<a href="#">parts of Circles NOTES.pdf</a> 
8/25/20	Quadrilateral Properties	<a href="#">Quadrilaterals notes BLANK .pdf</a> 
		<a href="#">Quadrilaterals.pdf</a> 

# Class Instructions

A blank copy of the pdf and filled  
in notes are posted in Canvas  
under the pages tab.



Khan Academy: [Khan Academy LINK](#)

Carnegie Learning: [Carnegie Learning \(Textbook Access\) LINK](#)

Math 2 Remind: [Remind LINK](#) ↗

Webex: Link of the left

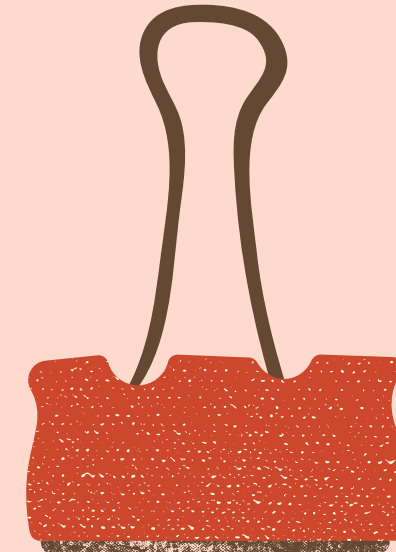
Notes: Located in pages

Resources: Located in modules

Assignments: Located in assignments

# Assignments

Assignments can be found in the assignments tab in Canvas. Students submit all work to this location as well.



The screenshot displays the Canvas LMS interface with the 'Assignments' tab selected in the left-hand navigation menu. The main content area is divided into two sections: 'Overdue Assignments' and 'Upcoming Assignments'. The 'Overdue Assignments' section lists two items: 'Introduction Assignment:' due on Aug 22 at 11:59pm for -/10 pts, and 'Classwork: Circles 8/18' due on Aug 22 at 11:59pm for -/10 pts. The 'Upcoming Assignments' section lists one item: 'Book work: Assignment page M1-39' due on Aug 27 at 8:59am for -/10 pts. Each item is preceded by a document icon with a pencil.

Overdue Assignments	
	<b>Introduction Assignment:</b> Due Aug 22 at 11:59pm   -/10 pts
	<b>Classwork: Circles 8/18</b> Due Aug 22 at 11:59pm   -/10 pts

Upcoming Assignments	
	<b>Book work: Assignment page M1-39</b> Due Aug 27 at 8:59am   -/10 pts

# Office Hours

I have open office hours during times  
schduled on canvas - Webex.

## Current Availability:

Monday-Wednesday 12:30-2:15pm

Mondays 11:30-1:00pm





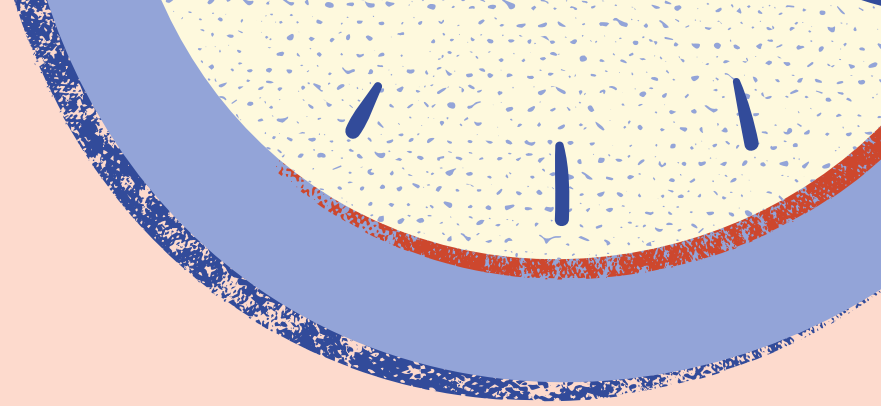
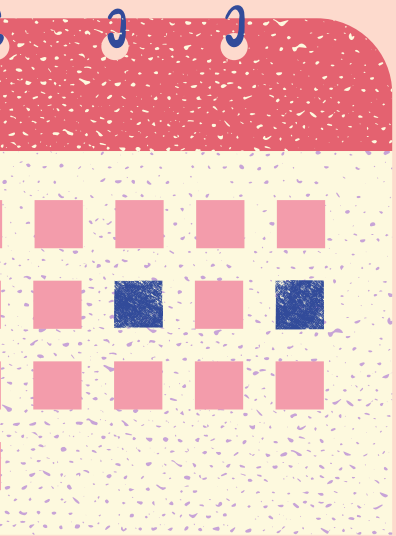
## Additional Ways to Contact me

Email: [nava.daniela@pusd.us](mailto:nava.daniela@pusd.us)

Remind:            Math 2: @math2msn  
                         Math 2H: @math2hms

Google Hangouts Chat: Students can message me through the application. (PUSD account only)

Canvas Messages



Thank You!

